

## Specifications

OUTPUT .....	1/4" jack (unbalanced)	THD .....	1.5%
OUTPUT LEVEL (max, nominal) .....	0dBv / -10dBv	S/N RATIO .....	85dB
OUTPUT IMPEDANCE .....	10K min - 70K max	NOISE FLOOR .....	34uV
INPUT .....	1/4" jack (unbalanced)	AC/AC ADAPTER .....	95V-130V
INPUT LEVEL (max, nominal) .....	-30dBv / >+20dBv	Tube Type .....	(2x) 12AX7A
INPUT IMPEDANCE .....	1M $\Omega$	Dimensions ...	5.5" x 5.7" x 1.5" (14 x 14.5 x 3.75 cm)
AUDIO RESPONSE		Weight .....	2.6 lbs (1.8 Kg)
(controls adjusted) .....	50Hz-16kHz @ +/-3dB		

## General Notes

Although the TTV-2 is very ruggedly housed in heavy gauge steel, care should be taken in handling the unit as the tube utilized is made from glass. Avoid physical abuse. The footswitch is all that is needed to switch the unit.

## Service for your Nady Audio Product

(U.S.) Should your NADY AUDIO product require service, please contact the Nady Service Department via telephone at (510) 652-2411, or e-mail at [service@nady.com](mailto:service@nady.com).

(International) For service, please contact the NADY AUDIO distributor in your country through the dealer from whom you purchased this product.

**DO NOT ATTEMPT TO SERVICE THIS UNIT YOURSELF AS IT CAN BE DANGEROUS AND WILL ALSO VOID THE WARRANTY.**

**CAUTION!**  
Do not open this unit. Leave servicing and changing tubes to qualified personnel only. Lethal voltages can be present even after the unit has been off for some time.

# NADY<sup>®</sup> AUDIO

## OWNER'S MANUAL



# TTV-2

## Dual Tube Vibrato and Tremolo Effects Pedal

**NADY<sup>®</sup>  
AUDIO**

NADY SYSTEMS, INC. • 6701 SHELLMOUND STREET, EMERYVILLE, CA 94608  
Tel: 510.652.2411 • Fax: 510.652.5075 • [www.nady.com](http://www.nady.com)

## Introduction

Congratulations! You have just purchased one of the finest professional effects pedals on the market today. This unit was developed using the expertise of professional sound engineers and working musicians. You will find your new NADY AUDIO TTV-2 dual tremolo/vibrato pedal has superior performance and greater flexibility than any other such unit in its price range. Read these instructions carefully to get the most out of your new unit.

Thanks for selecting NADY AUDIO as your choice for a Tremolo/Vibrato pedal

## Features

- Dual, all tube signal path design uses two premium 12AX7A vacuum tubes for the warmest, richest, and most natural sounding tremolo and vibrato sounds available
- Rate/Intensity controls offer the widest range possible of tremolo/vibrato effects
- Choice of three types of note bending vibratos which mimic Leslie, Wurlitzer, Hammond and other classic organ vibratos
- Output control offers considerable boost and a powerful tone
- Compact enough for a paddle board
- Rugged 14 gauge steel housing and heavy-duty bypass switch for years of trouble-free performance

## Controls and Connections

### (1) OUTPUT

The Output control adjusts to overall signal output level

### (2) RATE

The Rate knob adjusts the speed of modulation for the Vibrato or Tremolo. As the RATE knob is turned from the counter-clockwise (minimum) position to the clockwise (maximum) position, the rate of modulation will increase.

### (3) RATE INDICATOR

The Rate LED blinks at the same rate as the effect is modulating, as selected by the Rate knob.

### (4) INTENSITY

The Intensity Knob adjusts the amount of Vibrato or Tremolo that will effect your signal. As the INTENSITY knob is turned from the counter-clockwise (minimum) position to the clockwise (maximum) position, the amount of the effect will increase.

### (5) ON/OFF SWITCH

This switch is between the effected signal (ON) and the uneffected (bypassed) signal (OFF). When in Bypass mode the input is connected directly to the output.

### (6) ON/OFF INDICATOR

When the LED lights GREEN, the signal passes through the effects modulation selected (Tremolo or Vibrato ON). When the LED is RED, the signal is bypassed (OFF).

### (7) VIBRATO/TREMOLO SWITCH

This selects the type of effect desired.

### (8) VIBE SWITCH

When the TTV-2 is in Vibrato mode, the VIBE switch will select between 3 different types of Vibrato sounds which mimic 3 different classic organ vibratos. This switch has no function when the unit is in Tremolo mode.

### (9) INPUT

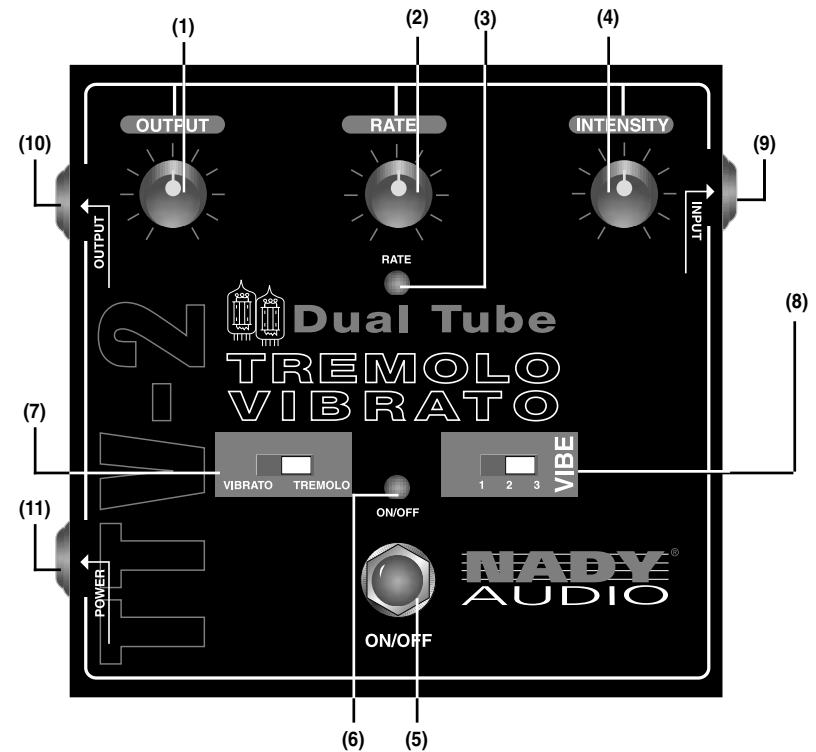
Connects to guitar/keyboard/audio source.

### (10) OUTPUT

Connects to amplifier.

### (11) POWER ADAPTER JACK

Use only the special Adapter provided.



## Tube Replacement

Change the tubes only after noticing a market degradation in audio. The TTV-2 is designed to provide years of quality operation before the tubes might need to be changed.

1. Disconnect all wires, cables into the unit.
2. Remove the top panel knobs carefully, pulling straight off to avoid damage.
3. Remove all nuts and washers for the footswitch, the potentiometers and the IN/OUT jacks.
4. Remove all screws — 8 screws from the bottom panel, 4 screws from each side panel.
5. Hold the tube socket to loose tube, one at a time. (Tube type: High-Mu Twin Tube -12AX7A).
6. Insert the new tubes by lining up the pins to the socket and firmly push the top of the tube.
7. Reverse process as item 4-3-2-1 to reassemble the unit.

